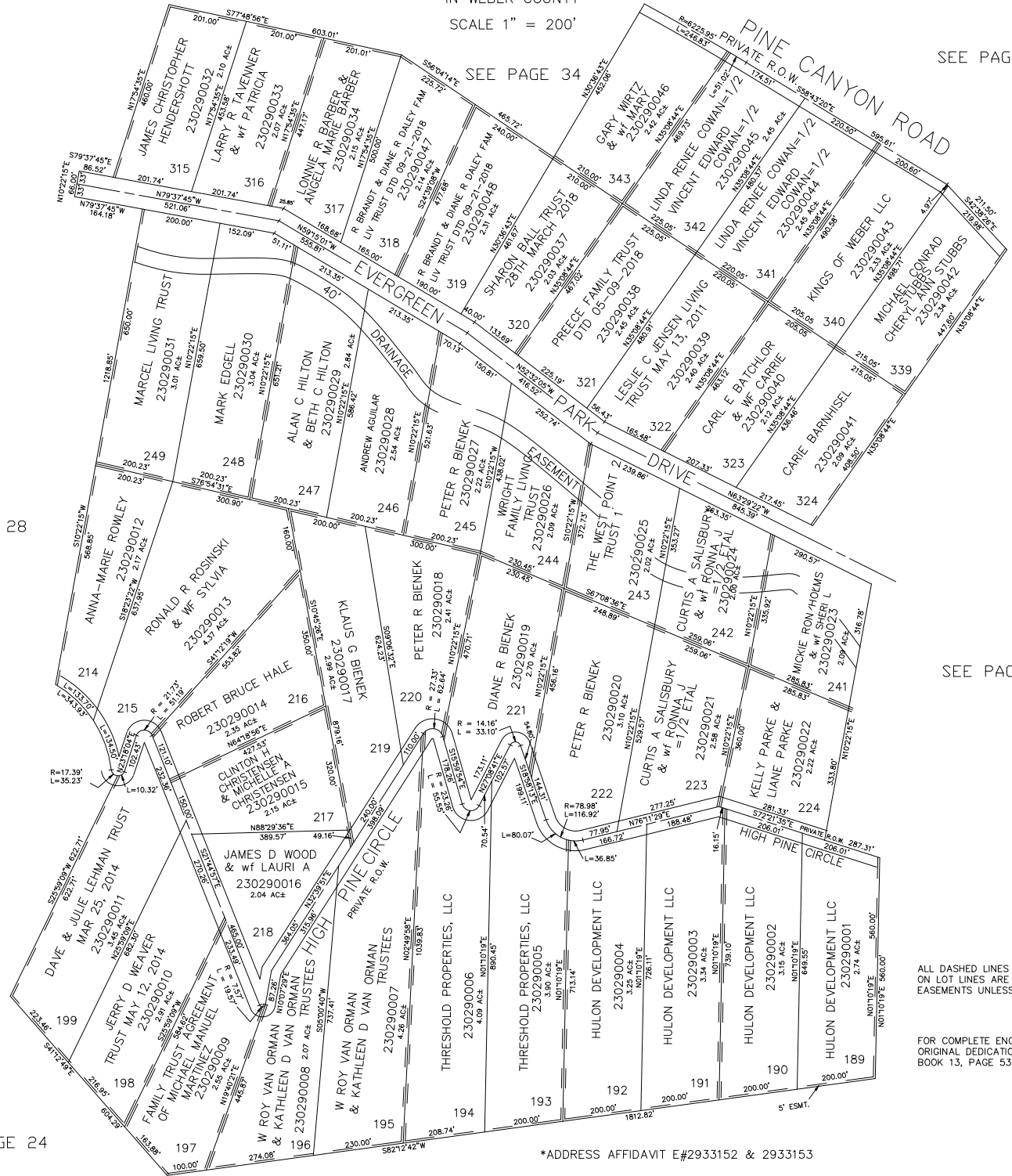


PART OF SEC. 32-33, T.7N., R.3E., S.L.B. & M.  
**EVERGREEN PARK SUBDIVISION NO. 1**  
LOTS 189-199, 214-224, 241-249, 315-324, 339-343

TAXING UNIT: 520

IN WEBER COUNTY  
SCALE 1" = 200'

SEE PAGE 36



SEE PAGE 34

SEE PAGE 28

SEE PAGE 30

SEE PAGE 24

\*ADDRESS AFFIDAVIT E#2933152 & 2933153

SEE PAGE 22